

VIVA MAGENTA!

E - B O O K

2 0 2 3 C O L O R O F T H E Y E A R

3 patterns to take the vibrant tone of red to your everyday life!



Color #3951
Viva Magenta

CÍRCULO



Lots of fun, energy and power in 2023!

The Pantone color Institute, the leading source of color expertise, has announced Viva Magenta (18-1750) as the color of the year 2023!

We have prepared 3 amazing fashion and decoration patterns to inspire you to take the color of 2023 to your best projects!

Get your needles, hooks and Viva Magenta color yarn to make your favorite pieces!

Remember to share your designs with us on social media. We love seeing everything you make!

Use #circuloyarns

Disclaimer: Measurements are approximate due to differences between centimeters and inches, needle sizes and tension. All care has been taken to allow accurate completion of the pattern but the occasional error is inevitable though. We apologize for any inconvenience. Please if you find any error or have any question about patterns send an email to: patternsupport@circulo.com.br

VIVA
MAGENTA

The color of 2023 will be present in the fashion, decoration and design universe! It is a pulsating, cheerful, energy-filled tone!

Described by the institute as a brave and fearless, pulsating color whose exuberance promotes a joyous and optimistic celebration, writing a new narrative.

"It is a new animated red that revels in pure joy, encouraging experimentation and self-expression without restraint, an electrifying, and a boundary-less shade that is manifesting as a stand-out statement. Viva Magenta welcomes anyone and everyone with the same verve for life and rebellious spirit. It is a color that is audacious, full of wit and inclusive of all" says the Institute.

"In this age of technology, we look to draw inspiration from nature and what is real. Viva Magenta is inspired by the red of cochineal, one of the most precious dyes belonging to the natural dye family as well as one of the strongest and brightest the world has known." explains Leatrice Eiseman, executive director of the Pantone Institute.

PANTONE
Color of 2023

Viva Magenta
18-1750

This color is already available on the color charts of some of our yarns. Choose your favorite yarn and use Viva Magenta as the color of your next designs!



Anne | Cléa | Charme | Amigurumi
Duna | Natural Cotton Maxcolor



Devotion
Table runner

Devotion Table runner

Created by Lindomar Manerich
Size: 28.75" x 11"
Level: Easy

Material:
Circulo Yarns - Duna - color #3951 (Viva Magenta)
Crochet hook D-3

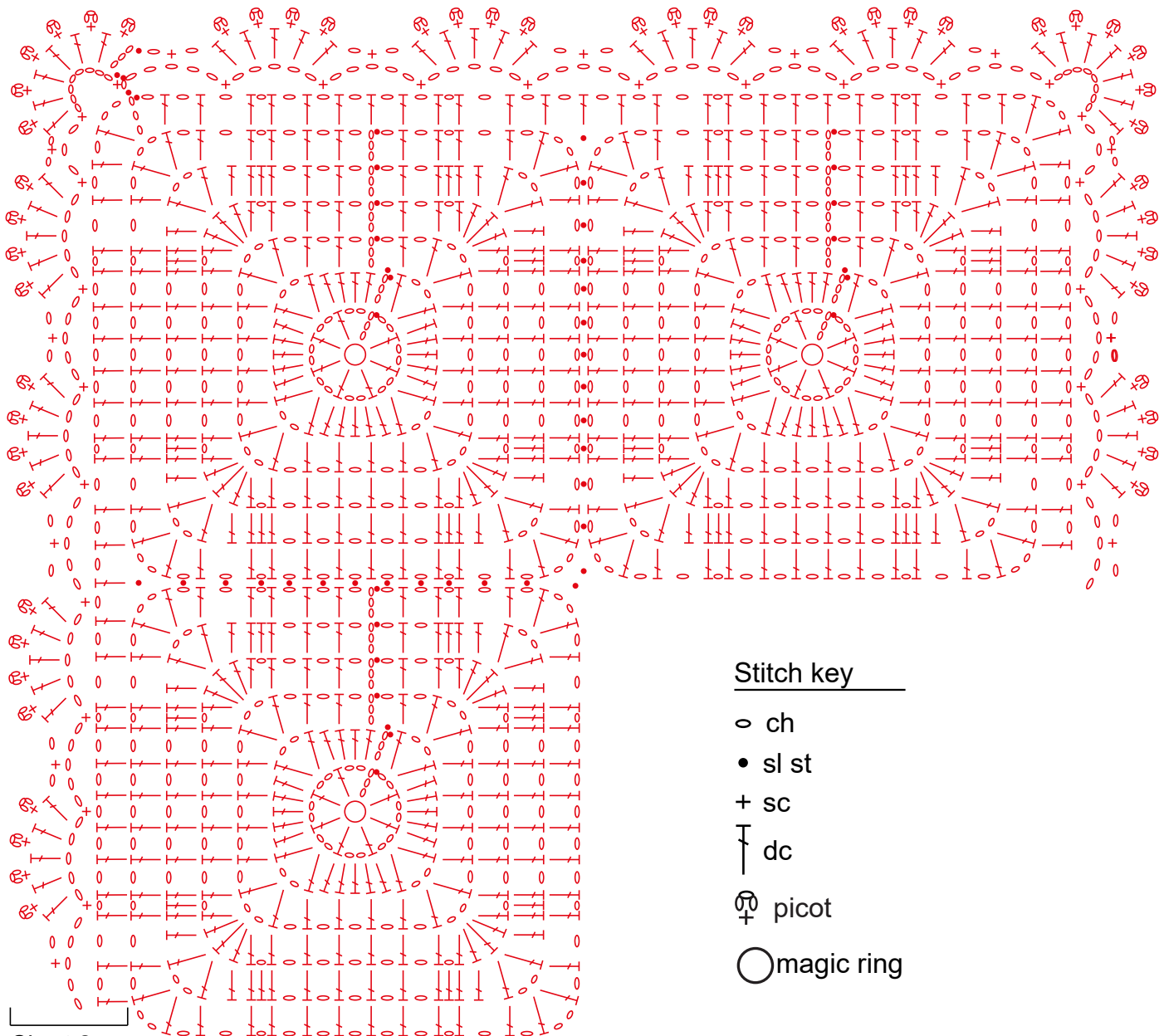
Stitch glossary and abbreviations:
stitch: st
make: mk
skip: sk

chain: ch
slip st: sl st
single crochet: sc
double crochet: dc
round: rnd

Square (mk 12)
Make a magic ring. Crochet in the round.
Follow chart 1.

Assembly and finishing
Join motifs with sl sts in the last rnd as shown on the assembly chart.

Contour
Crochet in the round.
Follow chart 2 around runner. Once chart is completed, fasten off.



Stitch key

- ch
- sl st
- + sc
- ┆ dc
- ⊕ picot
- magic ring

Chart 2 -
Contour

Chart 1 - Motif



Viva Magenta

Top

Viva Magenta Top

Created by Milla Vieira

Material

Circulo yarns - Anne - 1 ball
color #3951
Crochet hook 1.75 mm
Tapestry needle
measuring tape & scissors

Stitch glossary and abbreviations:

stitch: st

make: mk

skip: sk

chain: ch

slip st: sl st

single crochet: sc

double crochet: dc

Increase: inc

decrease: dec

round: rnd

end of row/rnd: eor.

Pattern 1/2 and 3- follow
respective charts

Bands - follow chart

Crochet edge - follow chart

Mesh - follow chart

Gauge:

25 dc x 11 R = 4"/10 cm using
hook 1.75 mm.

Top:

Start at bands. Make 2.

Ch 7 + 3 to turn. Follow
chart up to 35.5". Join edges
forming a ring.

Work on one side of one
band and leave the other
band aside.

Crochet in the round. Follow
Pattern 1 chart, rep from
* to * 36x. Once chart is
completed, fasten off.

Sew the second band into
the last round of Pattern 1.

Work on top of this band.

Follow crochet edge chart,
rep from * to * 33x. Once
chart is completed, fasten
off.

Crochet in the round on
the first band again. Follow
Pattern 2 chart, rep from

* to * 14x. At 2.5" from the
beginning of Pattern 2 start
armhole shaping. Divide
work in two equal parts and
work sides separately. Stop
making 3 sts on both sides
in every row (5x). Once chart
is completed, follow Pattern
3 chart, rep from * to * (11x)
plus borders. In the last row
of Pattern 3, work in dc on
2.75" of each side. Do not
work on the central sts =
neckline.

Straps (mk 2)

Continue working on sides.
Follow Mesh chart up to 2.5".
Fasten off.

Finishing

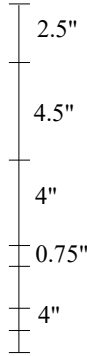
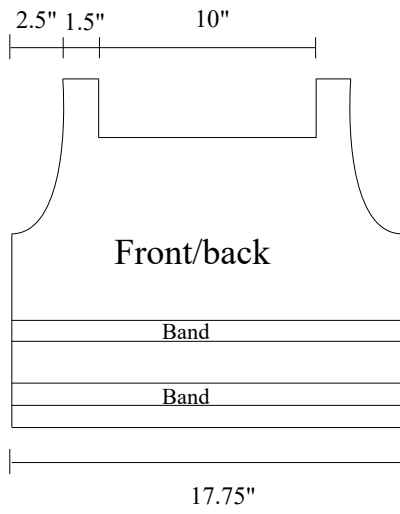
Work around neckline and
armhole.

Crochet in the round.

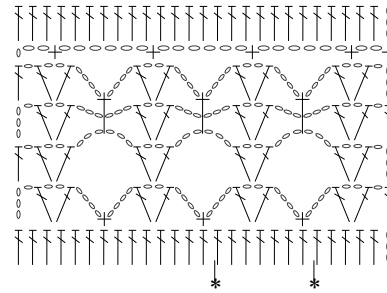
R1: sc until eor.

R2: 1 sc, *ch 2, 1 sc* rep from *
to * until the eor.

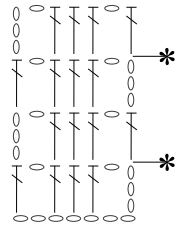
Fasten off and weave in
ends.



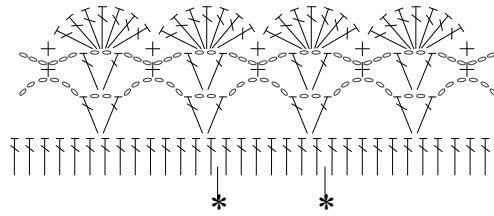
Pattern 1



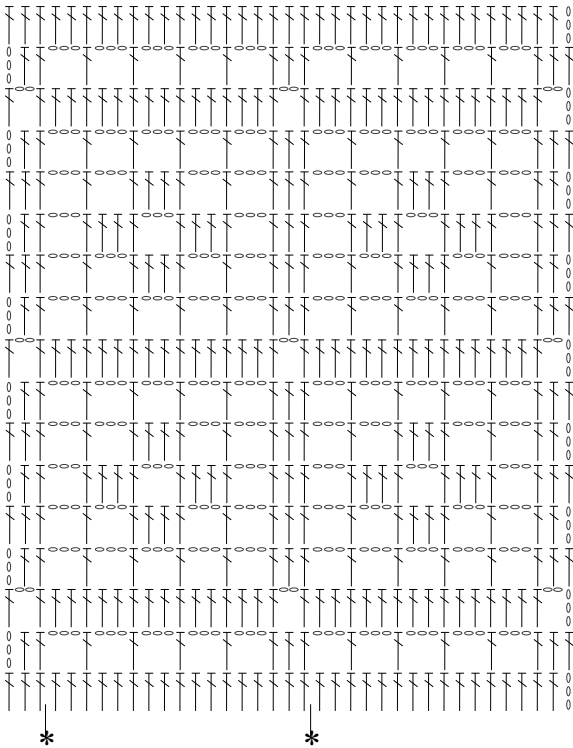
Bands



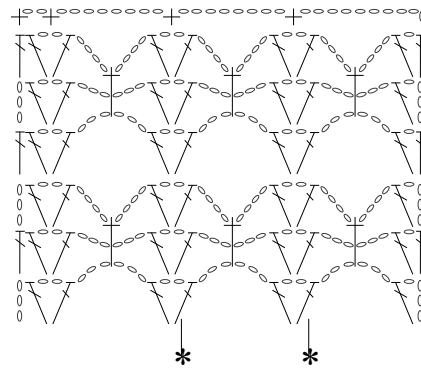
Crochet edge



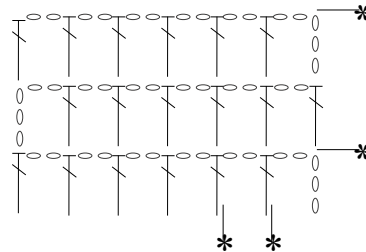
Pattern 2



Pattern 3



Mesh



Stitch key

○ = ch

+ = sc

└ = dc

Rep from * to *



Miss
honey

Miss honey

Created by Elisangela Guia
Approx. size: 10"
Level: Intermediate

Material

Circulo yarns - Amigurumi
1 ball in each color #8001
(white) #3951(viva magenta)
and #3077 (quartz)
Maxi Mouline - 1 skein color
#900
5 satin ribbon flowers
Crochet hook C-2
Black safety eyes (10 mm)
Tapestry needle
Polyester stuffing

Stitch glossary and abbreviations:

stitch: st
make: mk
skip: sk
chain: ch
slip st: sl st
single crochet: sc
double crochet: dc
increase: inc - 2 sts in the
same base st
decrease: dec - 2 sts closed
in different base sts.
round: rnd

Head

Start with color #3077
(quartz).
Make a magic ring.
Crochet in the round.
R1: 6 sc inside of the magic
ring.
R2: 1 sc, 1 inc = 9 sc
R3: 9 sc
Switch to color #8001.
R4: 2 sc, 1 inc = 12 sc

R5: 12 sc
R6: 2 sc, 1 inc = 16 sc
R7: 16 sc
R8: 3 sc, 1 inc = 20 sc
R9: 20 sc
R10: 4 sc, 1 inc = 24 sc
R11: 24 sc
R12: 5 sc, 1 inc = 28 sc
R13: 28 sc
R14: 6 sc, 1 inc = 32 sc
R15: 7 sc, 1 inc = 36 sc
R16: 8 sc, 1 inc = 40 sc
R17: 9 sc, 1 inc = 44 sc
R18: 10 sc, 1inc = 48 sc
Attach safety eyes between
rnds 15 & 16, 8 sts apart.
R19 - 26: 48 sc in each rnd.
R27: 6 sc, 1 dec = 42 sc
R28: 5 sc, 1 dec = 36 sc
R29: 4 sc, 1 dec = 30 sc
R30: 3 sc, 1 dec = 24 sc
R31: 2 sc, 1 dec = 18 sc
Insert stuffing.
R32: 1 sc, 1 dec = 12 sc
R33: 6 dec = 6 sc
Use tapestry needle, weave
the yarn through the front
loop of each stitch in your
last rnd, gently pull the yarn
taught.

Body

Start with color #3951 (viva
magenta)
Make a magic ring.
Crochet in the round.
R1: 6 sc inside of magic ring.
R2: 6 inc = 12 sc
R3: 1 sc, 1 inc = 18 sc
R4: 2 sc, 1 inc = 24 sc
R5: 3 sc, 1 inc = 30 sc
R6: 4 sc, 1 inc = 36 sc
R7: 5 sc, 1 inc = 42 sc
R8: 6 sc, 1 inc = 48 sc

R9 & 10: 48 sc
R11: 6 sc, 1 dec = 42 sc
R12: 42 sc
R13: 42 sc - back loop only
R14: 5 sc, 1 dec = 36 sc
R15 & 16: 36 sc
R17: 4 sc, 1 dec = 30 sc
R18 & 19: 30 sc
R20: 3 sc, 1 dec = 24 sc
R21 & 22: 24 sc
R23: 2 sc, 1 dec = 18 sc
Switch to color #8001
(white)
R24: 18 sc - back loop only
R25 & 26: 18 sc
Fasten off with a tail for
sewing.

Skirt

Join color #3951 (viva
magenta) in the front loops
of R13.
R1: 1 dc in each front loop of
R13. Crochet in the round.
R2 & 3: 1 dc, 1 inc.
Insert stuffing.

Ears (mk 2)

Use color #8001 (white)
Make a magic ring.
Crochet in the round.
R1: 6 sc inside of magic ring.
R2: 6 inc = 12 sc
R3: 1 sc, 1 inc = 18 sc
R4: 2 sc, 1 inc = 24 sc
R5: 3 sc, 1 inc = 30 sc
R6: 4 sc, 1 inc = 36 sc
R7 - 11: 36 sc
R12: 4 sc, 1 dec = 30 sc
R13: 3 sc, 1 dec = 24 sc
R14: 2 sc, 1 dec = 18 sc
R15: 1 sc, 1 dec = 12 sc
Fasten off with a tail for
sewing. Sew ears onto head
as shown in the picture.

Legs (mk 2)

Use color #8001 (white)

Make a magic ring.

Crochet in the round.

R1: 6 sc inside of magic ring.

R2: 6 inc = 12 sc

R3: 1 sc, 1 inc = 18 sc

R4: 2 sc, 1 inc = 24 sc

R5 & 6: 24 sc

R7: 4 sc, 1 dec = 20 sc

R8: 4 dec, 12 sc = 16 sc

R9: 2 dec, 12 sc = 14 sc

R10 - 22: 14 sc in each rnd.

Insert stuffing.

Arms (mk 2)

Use color #8001 (white)

Make a magic ring.

Crochet in the round.

R1: 6 sc inside of magic ring.

R2: 6 inc = 12 sc

R3: 1 sc, 1 inc = 18 sc

R4 - 6: 18 sc

R7: 1 sc, 1 dec = 12 sc

R8 - 20: 12 sc in each

Insert stuffing.

Tail

Use color #8001 (white)

Make a magic ring.

Crochet in the round.

R1: 5 sc inside of magic ring.

R2 - 18: 5 sc

Assembly and finishing

Sew head onto body.

Sew arms 2 rnds below color Viva Magenta.

Sew legs onto bottom of body, 2 rnds apart.

Sew tail onto back 2 rnds below skirt.

Sew ears 8 rnds behind eyes, 9 sts apart.

Use Maxi Mouline to embroider eyelashes and eyebrows as shown in the picture.

Glue 3 satin ribbon flowers onto front as shown in the picture and 1 satin ribbon on each ear.

Optional: apply blush onto cheeks.

The background of the image is a dense, overlapping pattern of leaves, all rendered in a uniform, vibrant red color. The leaves vary in size and orientation, creating a textured, organic feel. The lighting is even, highlighting the veins and edges of the foliage.

CIRCULO