

CÍRCULO
PREMIUM
T-SHIRT
yarn

SPECIAL E-BOOK

4 exclusive
patterns!

Get delighted with the possibilities that the **Premium T-shirt yarn** offers!



CÍRCULO





The feeling of making a piece with your own hands is unique!

Seeing a new project take shape with all the effort and dedication put into every detail is the reason for much happiness and pride in being able to say, "I made it".

And if this piece is made with a **quality yarn** that values your effort, the feeling is even better!

In this special e-book, you will find **4 exclusive patterns using the Premium T-shirt yarn**. They are beautiful options for decoration projects and fashion accessories developed especially for you!

Choose your favorite piece and be amazed by the possibilities that the Premium T-shirt yarn from Círculo offers!

Remember to share your creations with us on social media. We love seeing everything you make!

Use **#circuloyarns**

Disclaimer: Measurements are approximate due to differences between centimeters and inches, needle sizes, and tension. All care has been taken to allow accurate completion of the pattern.

All care has been taken to ensure the accuracy of our patterns; the occasional error is inevitable though. We apologize for any inconvenience. Please if you find any error or have any questions about patterns send an email to:
patternsupport@circulo.com.br

Learn more about the **Premium T-shirt yarn!**

Circulo Premium T-shirt yarn is ideal for robust, different, and modern designs!

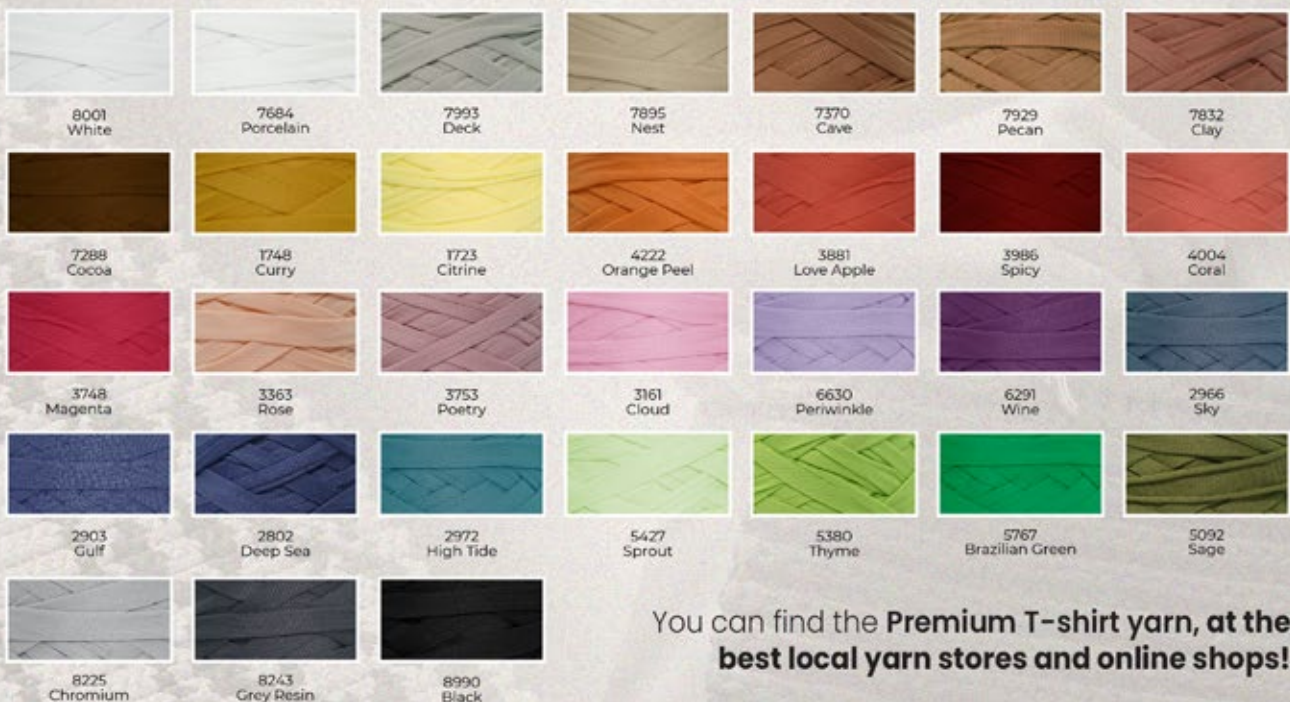
The perfect option for those who love to put creativity to work and get out of the same ole, the yarn brings together all the characteristics that every artisan wants: it is light, soft, seamless, and with a regular thickness pattern throughout the length. In addition, the yarn is made in Brazil and has an easy pull system, to make your life easier!

And to offer even more possibilities for your creations, the Premium T-shirt yarn has an impressive color chart. Available in 31 color options to color your best knitting and crochet projects!



Technical Information:

Composition: 94% Polyester and 6% Elastane
Yarn yardage and weight: 153.1 yds/ 140 m - 9.5 oz/270 g
Yarn weight: Bulky
Crochet hook: L/8 mm to 12 mm
Knitting needles: US13/9 mm to 12 mm
Total of Colors: 31



You can find the **Premium T-shirt yarn, at the best local yarn stores and online shops!**



Handbag with **silver handles**

Handbag with **silver handles**

Created by Kathia Moraes

Size: 27.5" circumference x 10.75" height

Level: easy

Material:

Circulo yarns - Premium T-shirt yarn

2 rolls color #8243 gray resin

Crochet hook J/6 mm or size to obtain gauge

2 rectangular silver handles

1 oval base 4" x 11"

Optional: fabric to line bag

Stitch glossary and abbreviations:

stitch: st

make: mk

skip: sk

chain: ch

slip st: sl st

single crochet: sc

half double crochet: hdc

Back post half double crochet: BPhdc

Front post half double crochet: FPhdc

Pattern - follow chart

round: rnd

end of row/rnd: eor.

Gauge:

11 S x 7 R = 4"/10 cm over Pattern using hook J.

Handbag:

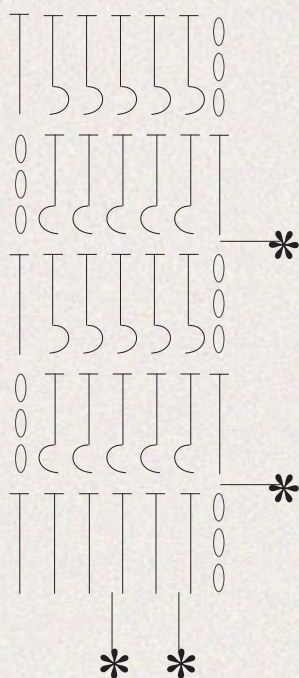
Start at bottom. Work around base in sc. Close with 1 sl st. Crochet in the round. Close rnds with 1 sl st and start rnds with ch 1.

Follow Pattern chart, rep from * to * (horizontally) 35x. At 10.75" from the beginning, fasten off.

Handles:

Centralize handles onto top opening as shown in the picture. Join handles with 1 row in sc into opening.

Pattern



Stitch key

○ = ch.

┆ = hdc

┆ = BPhdc

┆ = FPhdc

Rep from * to *



Kitty cat basket

Kitty cat basket

Created by Rosana Rechia
Size: 6" width x 4.5" tall
Level: Easy

Material:

Circulo yarns - Premium T-shirt yarn
 1 roll color #8225 (chromium);
 Premium T-shirt yarns scraps color #8243 (Gray Resin);
 Clea yarn scraps color #8990 (Black);
 Crochet hook J/10 mm or size to obtain gauge;
 Tapestry needle, measuring tape and scissors.

Gauge: 9 S x 10 R = 4"/10 cm in Waistcoat st using hook J.

Stitch glossary and abbreviations:

stitch: st
 make: mk
 skip: sk
 chain: ch
 slip st: sl st
 single crochet: sc
 Waistcoat st: Wst

double crochet st: dc
 treble crochet: tr
 Increase: inc
 decrease: dec
 round: rnd
 end of row/rnd: eor.

Chart 1 - Bottom

Use color #8225 chromium
 Crochet in the spiral. Make a magic ring.

R1: 6 Wst.
 R2: 6 inc = 12
 R3: *1 Wst, 1 inc* rep ** 5 times more = 18
 R4: *1 inc, 2 Wst* rep ** 5 times more = 24
 R5: *3 Wst, 1 inc* rep ** 5 times more = 30
 R6: *1 Wst, 1 inc, 3 Wst* rep ** 5 times more = 36
 R7: *5 Wst, 1 inc* rep ** 5 times more = 48
 R8: 48 sl sts.
 Do not cut yarn.

Chart 2 - side

Continue with color #8225 chromium. Crochet in spiral.
 R1 - 10: 48 Wst in each rnd.

R11: 48 sl sts.
 Do not cut yarn.

Chart 3 - Ears

Continue with color #8225 chromium.

ch 3, (1 dc, 1 tr, 1 dc)closed tog in different base sts, ch 3, 1 sl st in the next base st. Fasten off. Skip 7 sts and rep from **.

Use color #8243 gray resin to embroider eyes, nose, and mouth and Clea #8990 to embroider whiskers. (see chart).

Chart 1 - Bottom

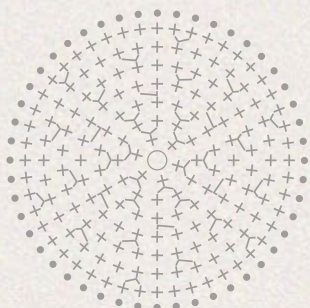


Chart 2 - sides



Rep from * to *

Stitch key

- o ch
- ∫ dc
- sl st
- x sc
- + Wst
- ∫∫ 2 Wst in the same base st
- magic ring
- ⌒ 1 dc, 1 tr, 1 dc closed tog in different base sts
- Premium T-shirt yarn #8225
- Premium T-shirt yarn #8243
- Clea #8990

Chart 3 - Ears



Embroidery pattern





Contemporaneous placemats

Contemporaneous placemats

Created by Rosana Rechia
Size: 6" width x 4.5" tall
Level: Easy

Material:

Circulo yarns - Premium T-shirt yarn
 2 rolls color #8243 (Grey Resin) and 1 roll in each color #8225 (Chromium) and #1748 (Curry);
 Crochet hook J/10 mm or size to obtain gauge;
 Tapestry needle, measuring tape and scissors.

Gauge:

8 sc x 8 R = 4"/10 cm using hook J.

Stitch glossary and abbreviations:

stitch: st

make: mk
 skip: sk
 chain: ch
 slip st: sl st
 single crochet: sc
 half double crochet: hdc
 double crochet: dc
 Increase: inc
 decrease: dec
 round: rnd
 end of row/rnd: eor.

Placemats - chart 1 (make 2)

Use color #8243 gray resin. Crochet back and forth. Ch 32 + 1 to turn.
 R1: start at the 2nd chain from hook, 32 sc. Cut yarn.
 R2: join color #8225 chromium, ch 1, 32 sc. Cut yarn.
 R3 - 5: join color #1748 curry: ch 1, 32 sc. Cut yarn.

Continue following chart 1 changing colors accordingly. Cut yarn but keep color #8243 gray resin to make the contour.

Contour - chart 2

Continue with color #8243 gray resin. Make 1 sl st in each base st. Cut yarn. Join yarn on the opposite side into the foundation chain. Make 1 sl st in each base st. Fasten off.

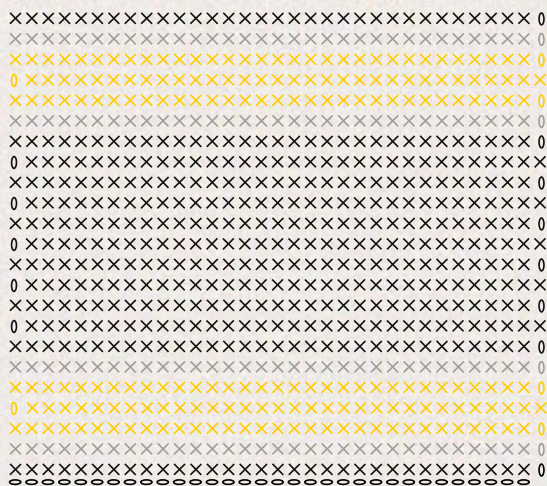


Chart 1

Ch 32 + 1 to turn

Chart 2 - Contour



Stitch key

- o ch
- sl st
- x sc
- Premium T-shirt yarn color #8225
- Premium T-shirt yarn color #8243
- Premium T-shirt yarn color #1748



Geometric rug

Geometric rug

Created by Anita Eskelsen

Size: 47.25" x 20.5"

Level: Intermediate

Material:

Circulo yarns - Premium T-shirt yarn
4 rolls color #8243 (Gray Resin);
3 rolls color #8225 (Chromium);
Crochet hook M/9 mm or size to obtain gauge;
Tapestry needle, measuring tape and scissors.

Gauge:

9 sc x 9 R = 4"/10 cm using hook M.

Stitch glossary and abbreviations:

stitch: st
make: mk
skip: sk
chain: ch
slip st: sl st
single crochet: sc
Increase: inc
decrease: dec
round: rnd
end of row/rnd: eor.

Tapestry crochet:

According to the tapestry crochet technique, you work with 2 strands of yarn in each row, switching colors according to chart. Work one color at a time, while keeping the other colors inside the sts throughout the work. The color of the yarn is always changed in the last 2 yarn over of the stitch. In a correct color change, you have a stitch in a solid color and a new color on your hook.

Chart 1 - Rug

Crochet back and forth.

Use color #8243 gray resin

Ch 43 + 1 to turn.

R1: start at the second chain from hook, 43 sc

R2: ch 1, 43 sc

R3: join color #8225 chromium but start with color #8243 gray resin: ch 1, 2 sc, switch to color #8225 chromium, 38 sc, switch to color #8243 gray resin, 3 sc. Continue following chart 1, changing colors accordingly.

Cut color #8225 chromium and continue working with color #8243.

Chart 2 - Contour

Continue with color #8243 gray resin. Crochet in the round. Start at the corner.

R1: ch 4, 1 sc in the same base st, *1 sc in each base st of sides, (1 sc, ch 3, 1 sc) into corner* rep from * to * across.

Close rnds with 1 sl st. Continue following chart 2. Once chart 2 is completed, cut yarn.

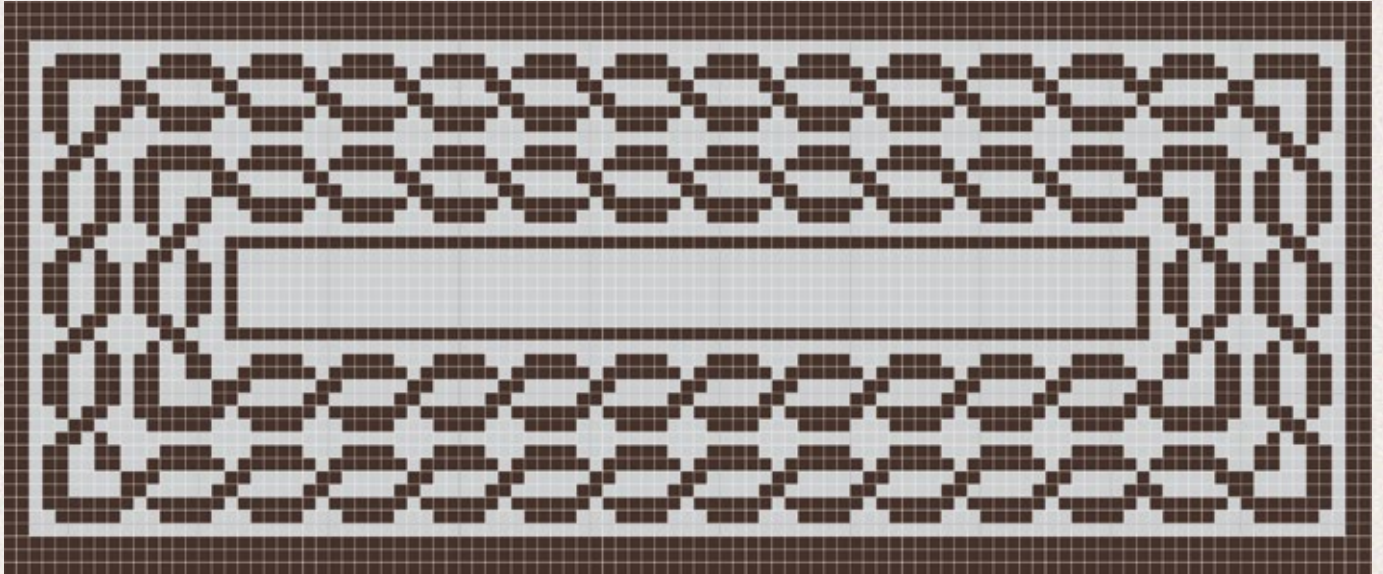


Chart 1

Ch 43 + 1 to turn



Chart 2 - Contour

Stitch key

- ch
- sl st
- = × 1 sc
- × sc
- Premium T-shirt #8243
- Premium T-shirt #8225

A person is shown from the chest up, wearing a white t-shirt and a white crocheted hat with a cat face design. The person is holding a pair of glasses. The background is a light, textured surface, possibly a wall or a backdrop.

CIRCULO

circuloyarns.com

© Instagram Facebook circulo.usa